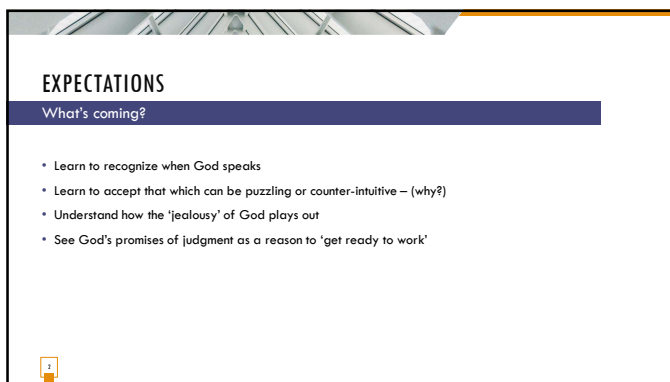
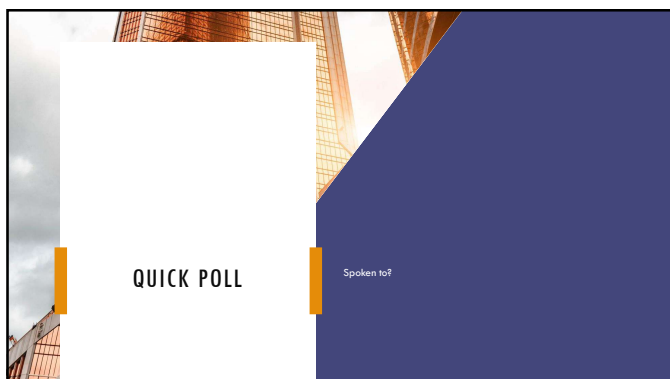


1



2



3

JEREMIAH 1:13

And the word of the LORD came to me the second time, saying, "What do you see?"
And I said, "I see a boiling pot, and it is facing away from the north."

- When God speaks He never contradicts Himself (Titus 1:2 'in hope of eternal life which God, who cannot lie')
- God never overrules Himself (Isaiah 40:8 'the word of our God stands forever')

4

JEREMIAH 1:13

And the word of the LORD came to me the second time, saying, "What do you see?"
And I said, "I see a boiling pot, and it is facing away from the north."

- About 250 years before Jeremiah, Israel was split into 2 kingdoms – north (Israel) and south (Judah) because of a disagreement over taxes. In truth King Solomon rebelled against God.

5



6

JEREMIAH 1:14

Then the Lord said to me:
 "Out of the north calamity shall break forth
 On all the inhabitants of the land.

- How does God describe what will happen and who will it affect?

7

JEREMIAH 1:15

For behold, I am calling
 All the families of the kingdoms of the north," says
 the Lord;
 "They shall come and each one set his throne
 At the entrance of the gates of Jerusalem,
 Against all its walls all around,
 And against all the cities of Judah.

- Why does God seem to direct the coming attack at Jerusalem in particular?

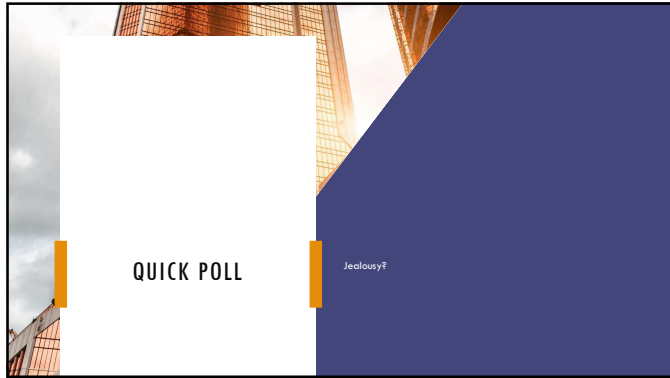
8

JEREMIAH 1:16

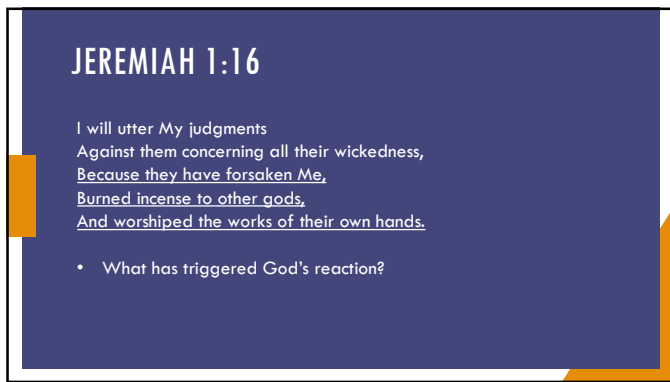
I will utter My judgments
 Against them concerning all their wickedness,
 Because they have forsaken Me,
 Burned incense to other gods,
 And worshiped the works of their own hands.

- We normally associate the word 'utter' with what?
- So how is God going to speak through the coming calamity?

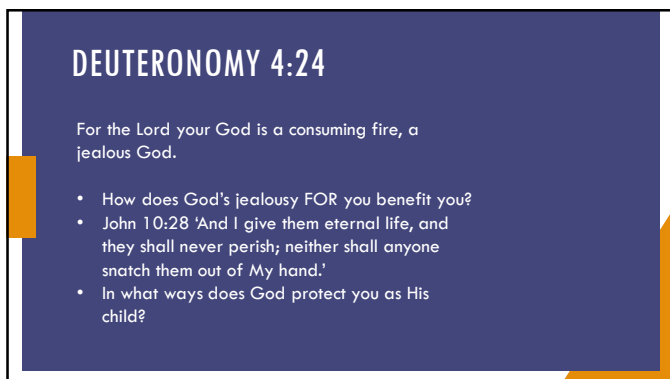
9



10



11



12

A QUICK RECAP

Understanding God's jealousy

- God can, and does, speak to us in many different ways
- He never contradicts Himself or overrules Himself
- Circumstances are often God's way to speak to His people
- God's love for you is a jealous love – it protects and fights for your heart
- It also extends to a love for the lost and a lost world